

NEIGHBORHOOD 04

APARTMENTS LAKESIDE

Water Front Duplex 355 m²

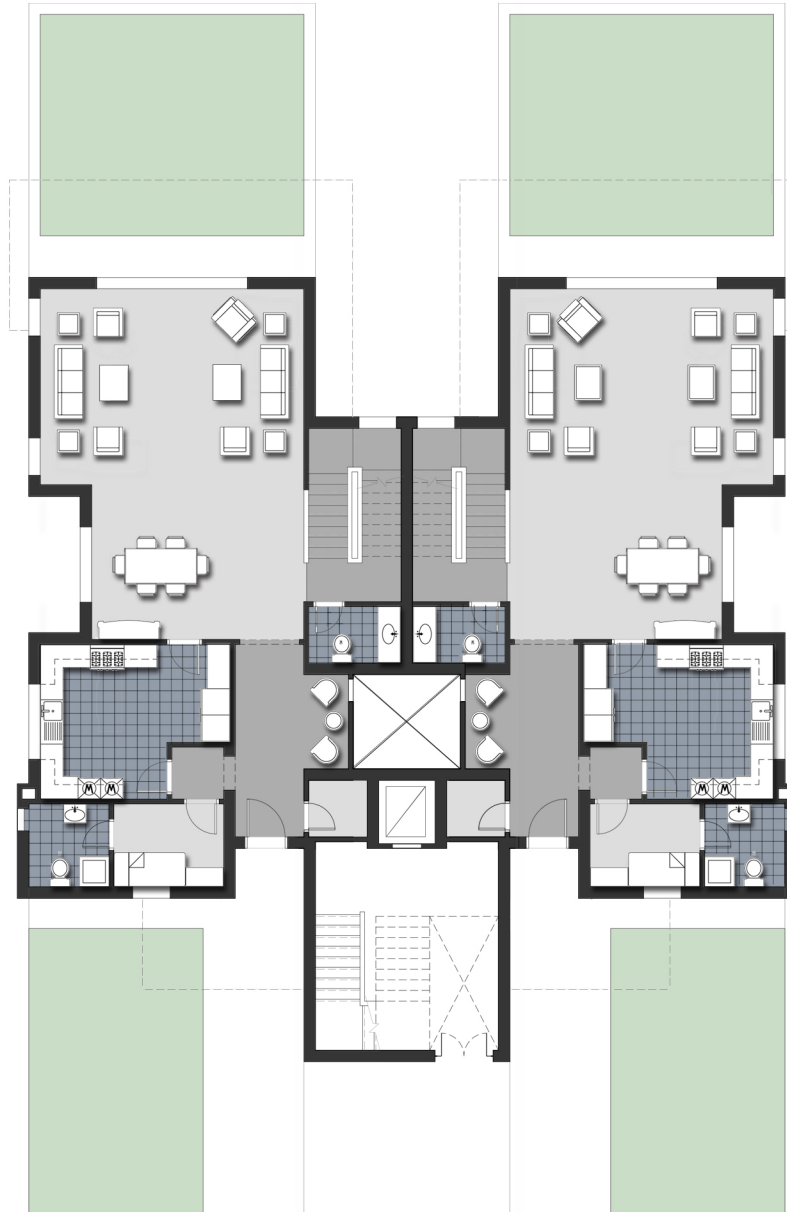
Sky Loft Duplex 345 m²

Garden terrace not included
Roof terrace not included



All materials, dimensions and drawings are approximate. Information is subject to change without notice. Drawings are not to scale and actual usable floor space may vary from the stated floor plan. The developer reserves the right to make revisions to the floor plan.

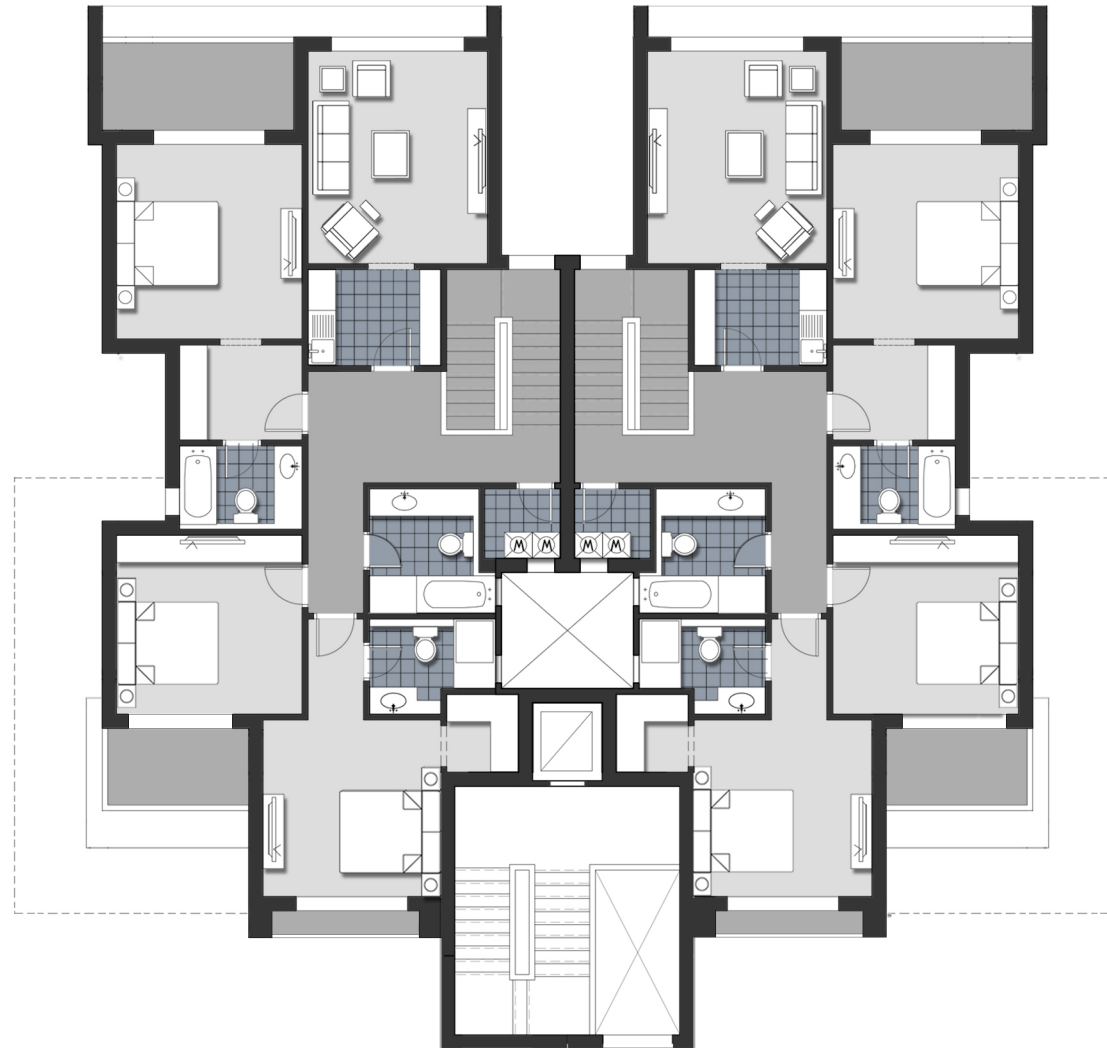
LAKESIDE GROUND FLOOR



Ground Floor

All materials, dimensions and drawings are approximate. Information is subject to change without notice. Drawings are not to scale and actual usable floor space may vary from the stated floor plan. The developer reserves the right to make revisions to the floor plan.

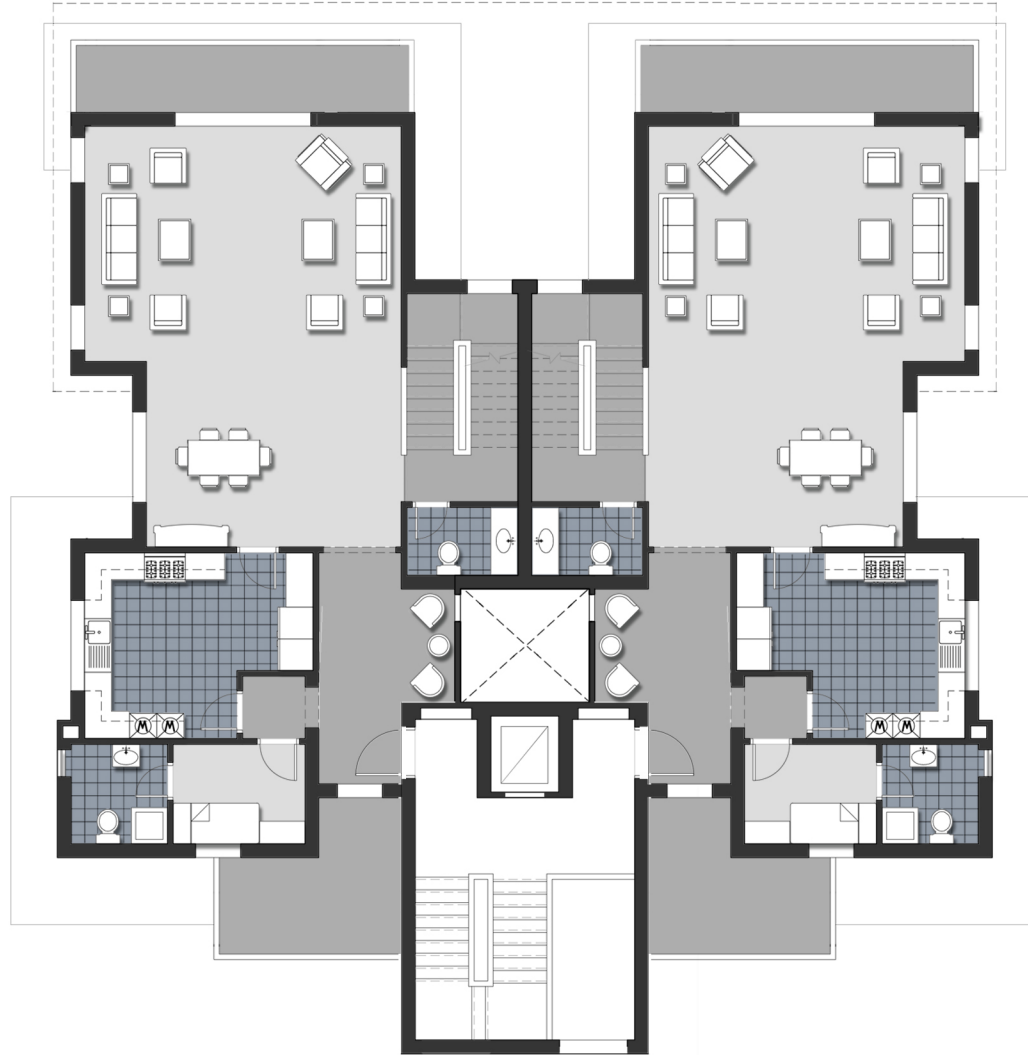
LAKESIDE FIRST FLOOR



First Floor

All materials, dimensions and drawings are approximate. Information is subject to change without notice. Drawings are not to scale and actual usable floor space may vary from the stated floor plan. The developer reserves the right to make revisions to the floor plan.

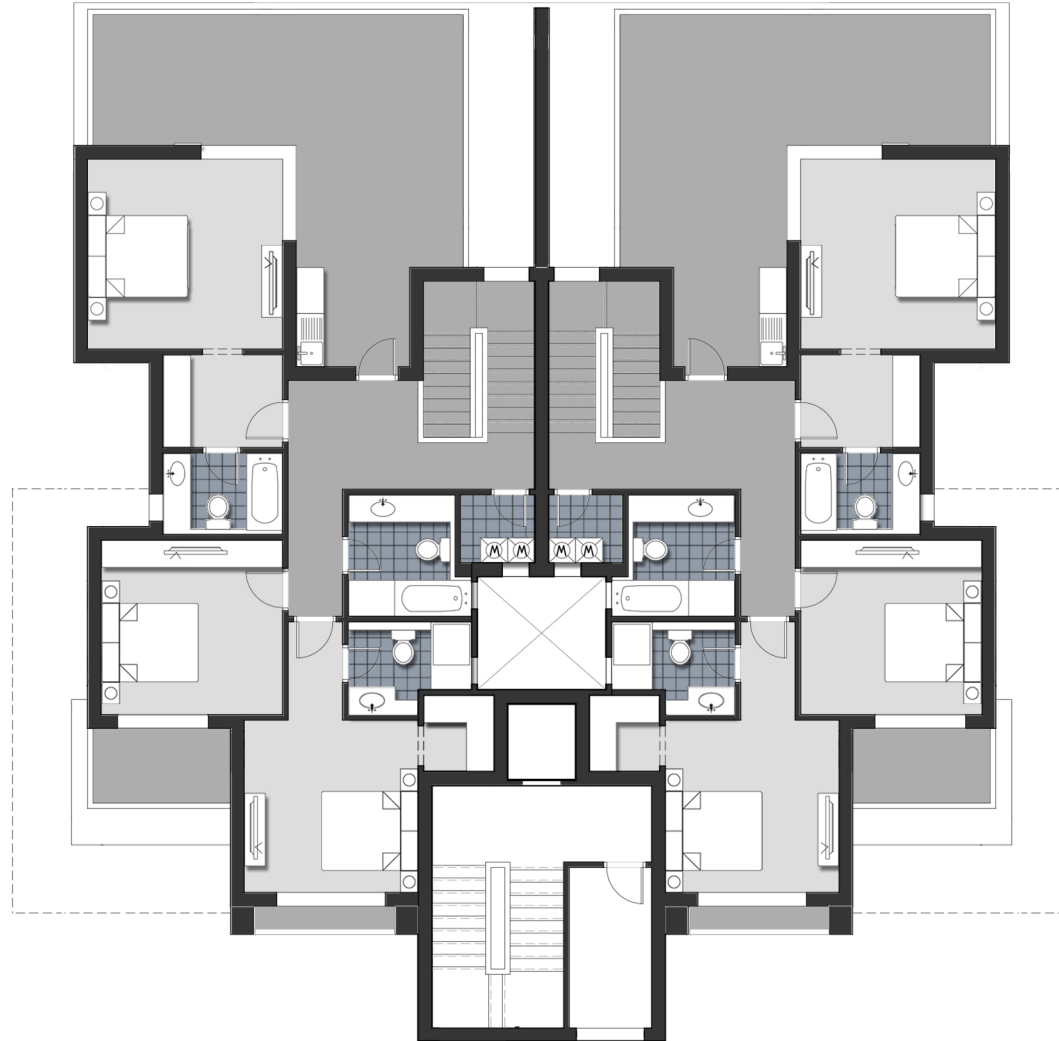
LAKESIDE SECOND FLOOR



Second Floor

All materials, dimensions and drawings are approximate. Information is subject to change without notice. Drawings are not to scale and actual usable floor space may vary from the stated floor plan. The developer reserves the right to make revisions to the floor plan.

LAKESIDE THIRD FLOOR

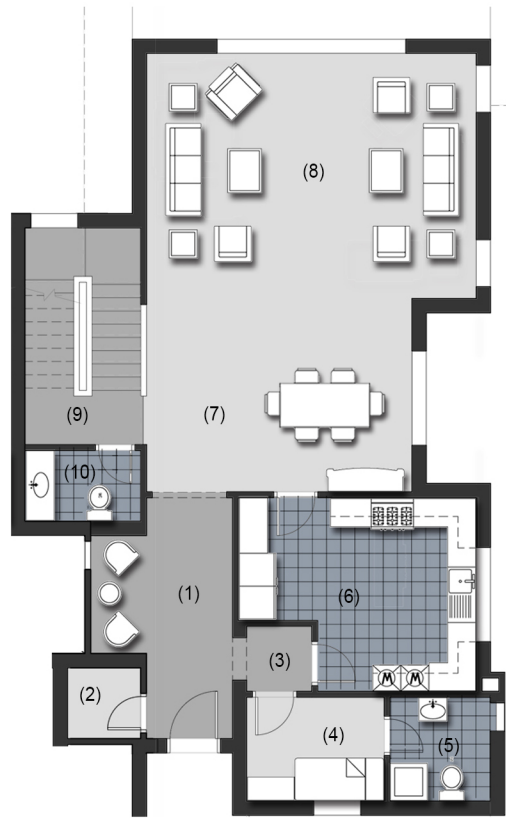
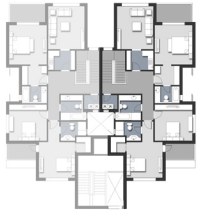


Third Floor

All materials, dimensions and drawings are approximate. Information is subject to change without notice. Drawings are not to scale and actual usable floor space may vary from the stated floor plan. The developer reserves the right to make revisions to the floor plan.

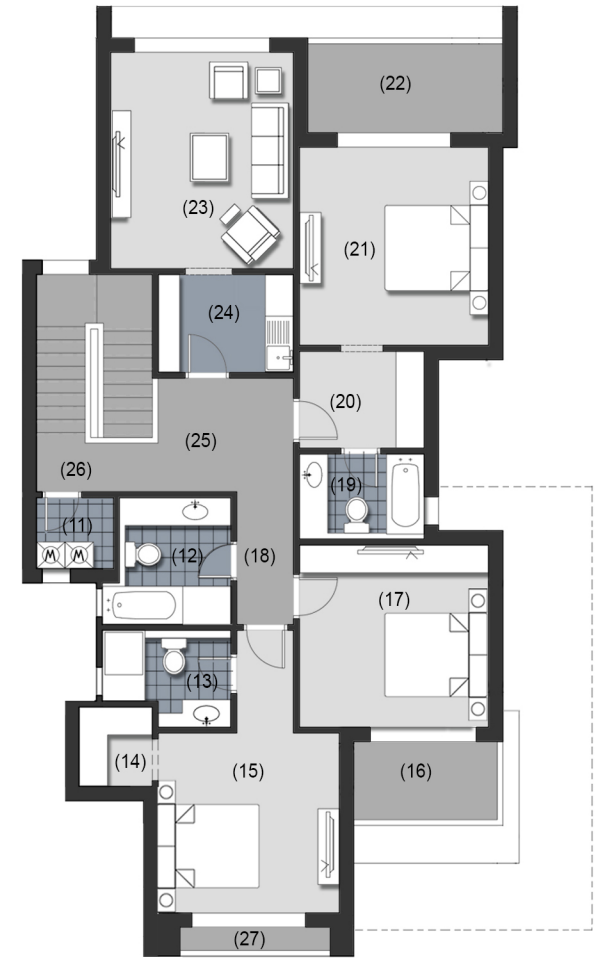
LAKESIDE WATER FRONT DUPLEX

Unit Area 355.00 m²



Ground Floor Total Unit Area 355.00 m²

(1) Entrance lobby	1.80 m X 5.10 m
(2) Storge	1.55 m X 1.50 m
(3) Lobby	1.40 m X 1.40 m
(4) Maid's room	2.90 m X 2.20 m
(5) Bathroom	2.15 m X 2.20 m
(6) Kitchen	5.00 m X 4.00 m
(7) Dining	5.60 m X 4.10 m
(8) Reception	7.00 m X 5.20 m
(9) Stair	2.45 m X 4.60 m
(10) Toilet	2.45 m X 1.50 m



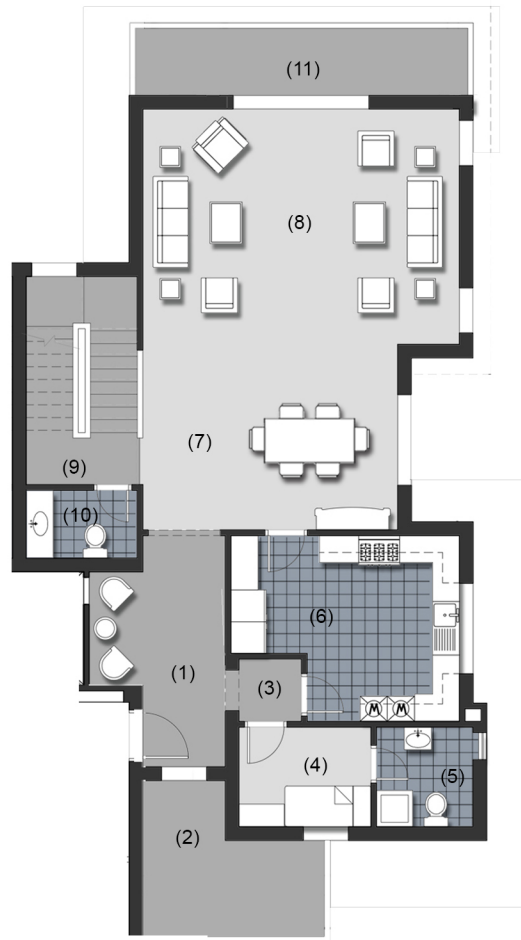
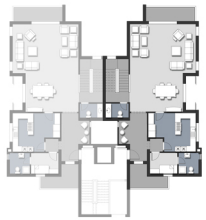
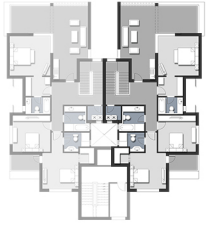
First Floor

(11) Laundry	1.65 m X 1.50 m	(21) Master Bedroom	4.00 m X 4.20 m
(12) Bathroom	2.70 m X 2.70 m	(22) Terrace	3.70 m X 1.90 m
(13) Bathroom	2.70 m X 2.05 m	(23) Living room	3.85 m X 4.55 m
(14) Dressing	1.55 m X 1.70 m	(24) Kitchenette	2.85 m X 2.05 m
(15) Master Bedroom	3.85 m X 3.80 m	(25) Lobby	2.85 m X 2.40 m
(16) Terrace	3.05 m X 1.65 m	(26) Stair	2.45 m X 4.60 m
(17) Bedroom	4.00 m X 3.85 m	(27) Walkout	0.60 m X 2.95 m
(18) Corridor	1.20 m X 2.80 m		
(19) Bathroom	2.65 m X 1.80 m		
(20) Dressing	2.65 m X 2.05 m		

All materials, dimensions and drawings are approximate. Information is subject to change without notice. Drawings are not to scale and actual usable floor space may vary from the stated floor plan. The developer reserves the right to make revisions to the floor plan.

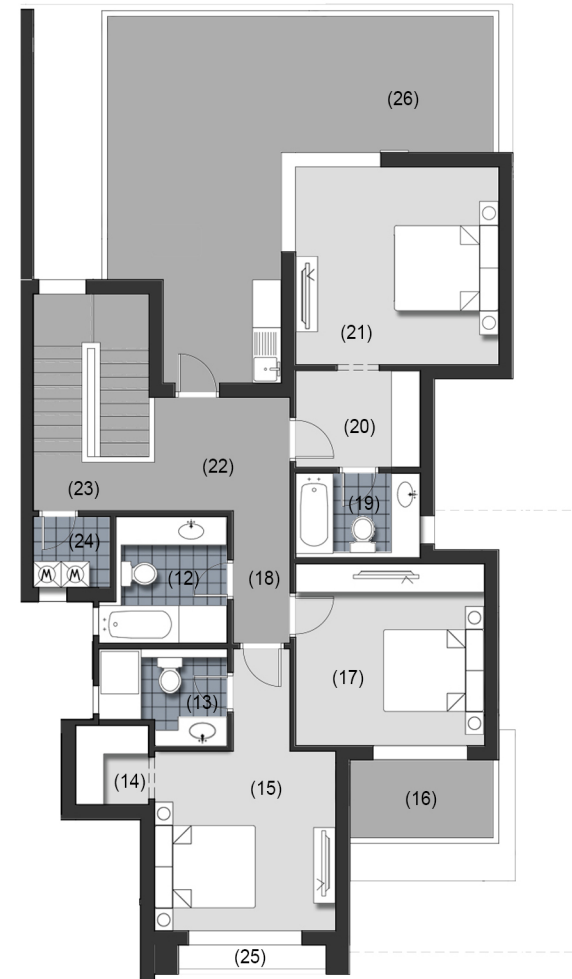
LAKESIDE SKY LOFT DUPLEX

Unit Area 345.00 m²



Second Floor Total Unit Area 345.00 m²

(1) Entrance lobby	1.80 m X 5.10 m
(2) Terrace	4.00 m X 2.55 m
(3) Lobby	1.40 m X 1.40 m
(4) Maid's room	2.90 m X 2.20 m
(5) Bathroom	2.15 m X 2.20 m
(6) Kitchen	5.00 m X 4.10 m
(7) Dining	5.60 m X 4.10 m
(8) Reception	7.00 m X 5.20 m
(9) Stair	2.45 m X 4.60 m
(10) Guest Toilet	2.45 m X 1.50 m
(11) Terrace	5.15 m X 1.50 m



Third Floor

(12) Bathroom	2.70 m X 2.70 m	(22) Lobby	2.85 m X 2.40 m
(13) Bathroom	2.70 m X 2.05 m	(23) Stair	2.45 m X 4.60 m
(14) Dressing	1.55 m X 1.70 m	(24) Laundry	1.65 m X 1.50 m
(15) Master Bedroom	3.85 m X 3.80 m	(25) Walkout	0.60 m X 2.95 m
(16) Terrace	3.05 m X 1.65 m	(26) Roof Terrace	40m ² (not included)
(17) Bedroom	4.00 m X 3.85 m		
(18) Corridor	1.20 m X 2.80 m		
(19) Bathroom	2.65 m X 1.80 m		
(20) Dressing	2.65 m X 2.05 m		
(21) Master Bedroom	4.30 m X 4.20 m		

All materials, dimensions and drawings are approximate. Information is subject to change without notice. Drawings are not to scale and actual usable floor space may vary from the stated floor plan. The developer reserves the right to make revisions to the floor plan.

NEIGHBORHOOD 04
APARTMENTS
LAKESIDE



All materials, dimensions and drawings are approximate. Information is subject to change without notice. Drawings are not to scale and actual usable floor space may vary from the stated floor plan. The developer reserves the right to make revisions to the floor plan.

NEIGHBORHOOD 04
APARTMENTS
LAKESIDE



All materials, dimensions and drawings are approximate. Information is subject to change without notice. Drawings are not to scale and actual usable floor space may vary from the stated floor plan. The developer reserves the right to make revisions to the floor plan.